

FENG

SHUI



10 Steps to a Traditional Feng Shui Consultation

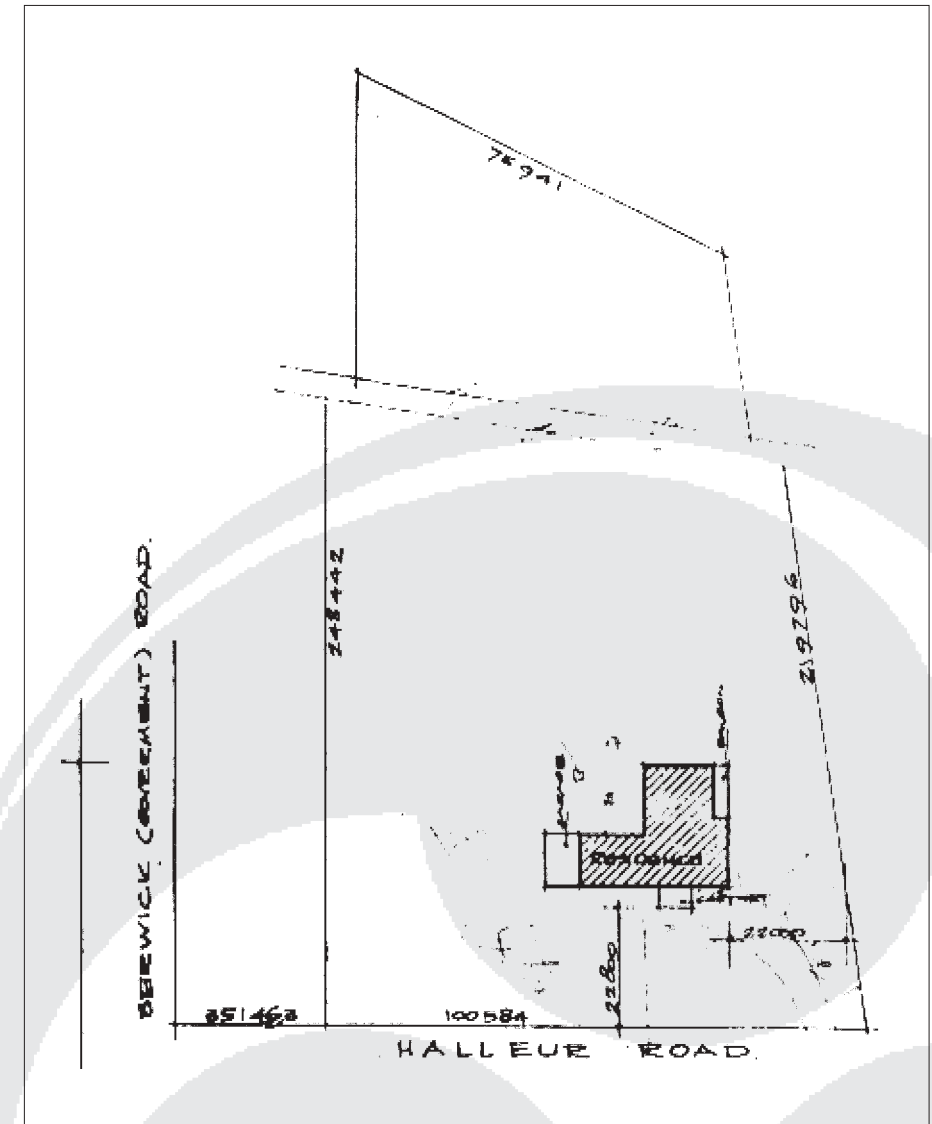
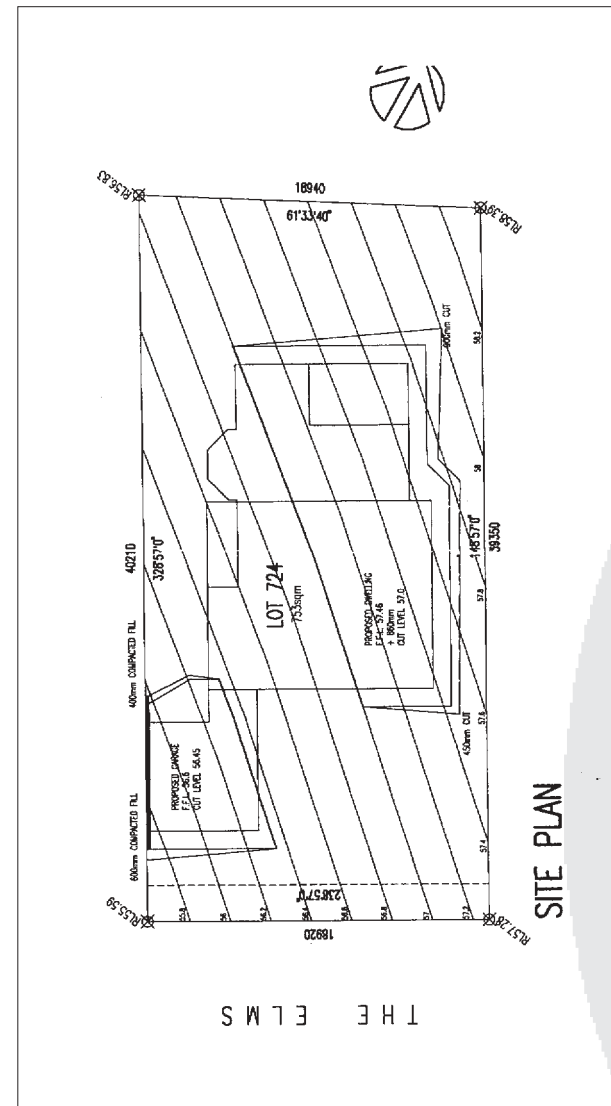
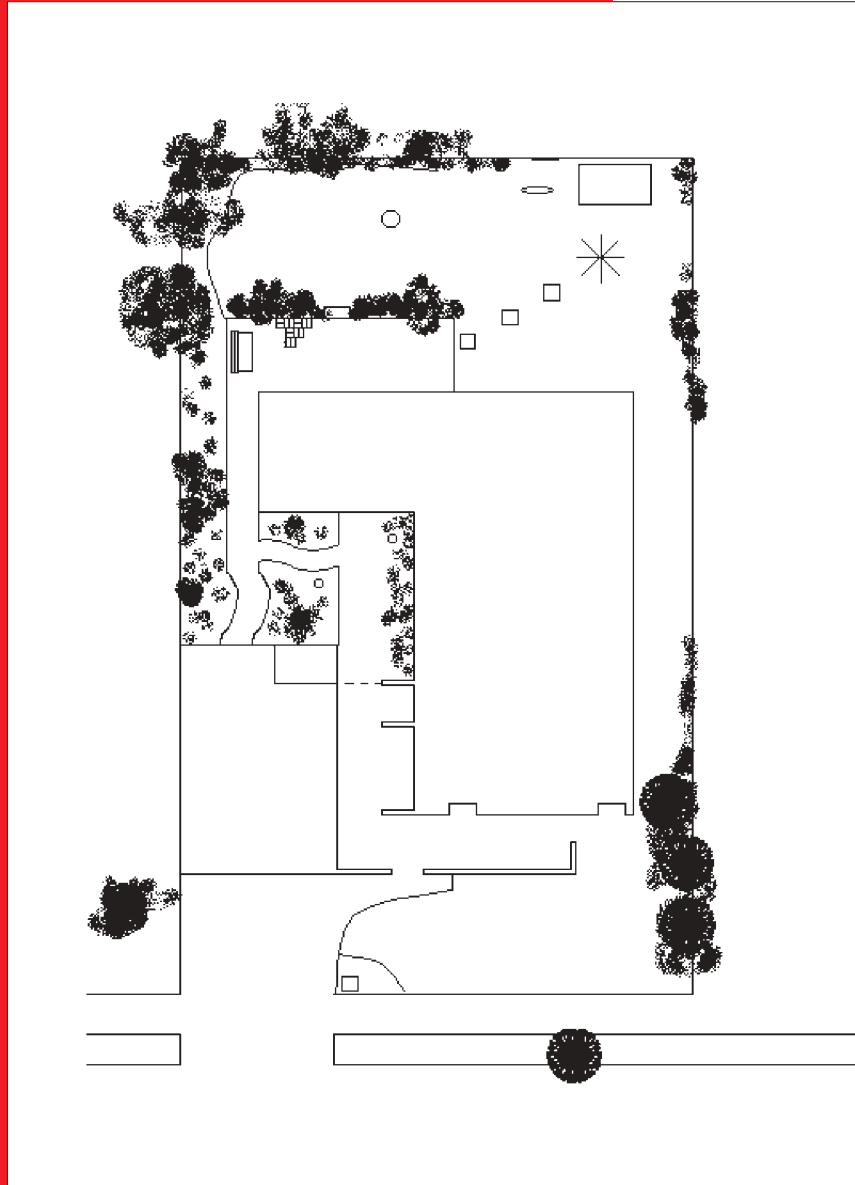


Master Jodi Brunner

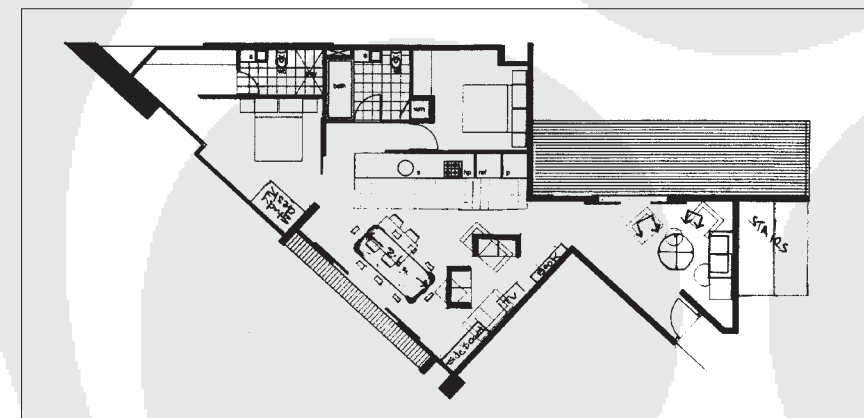
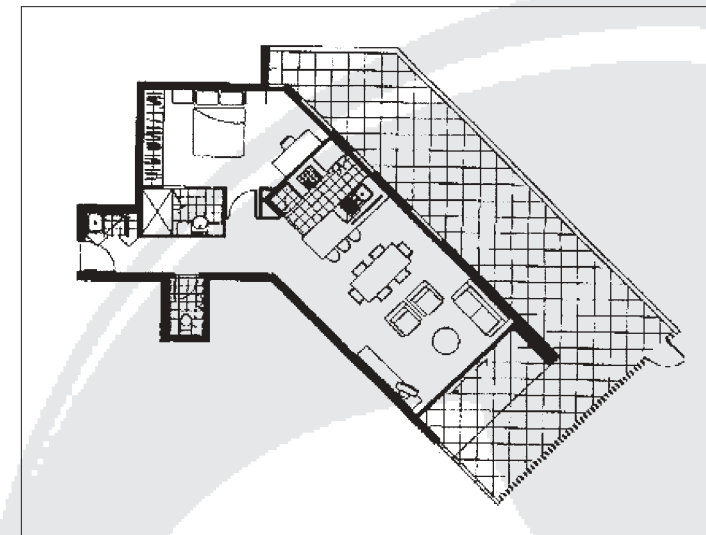
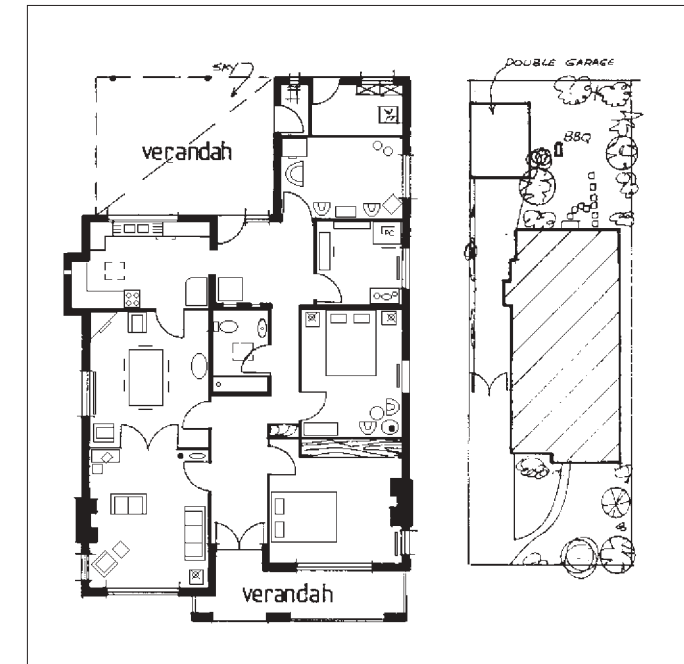
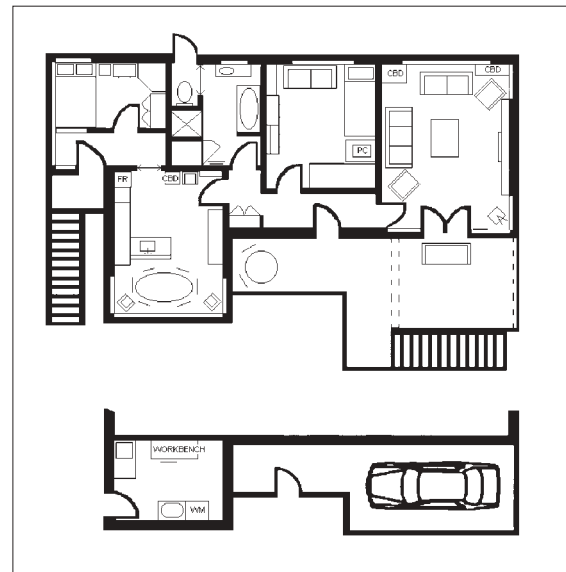
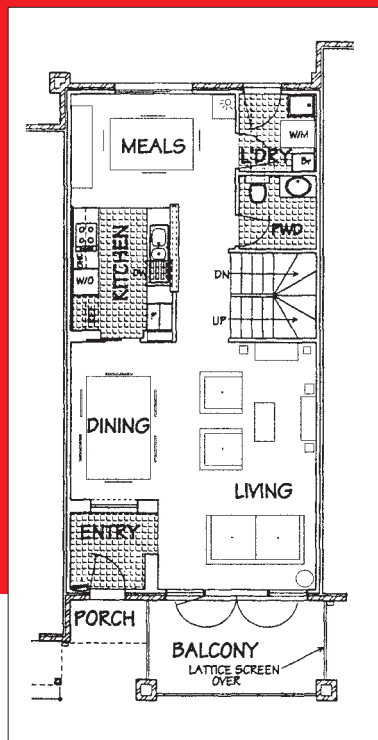
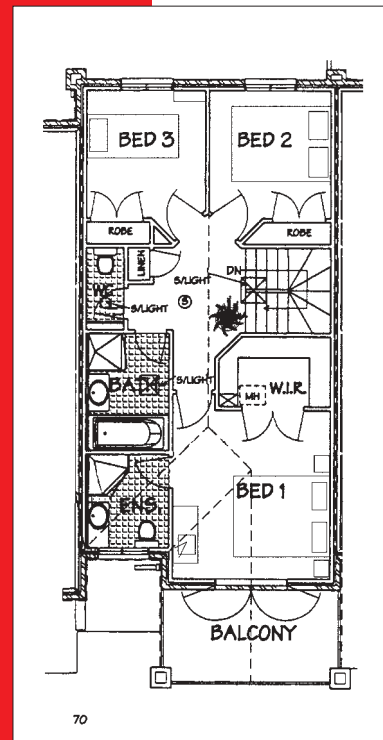
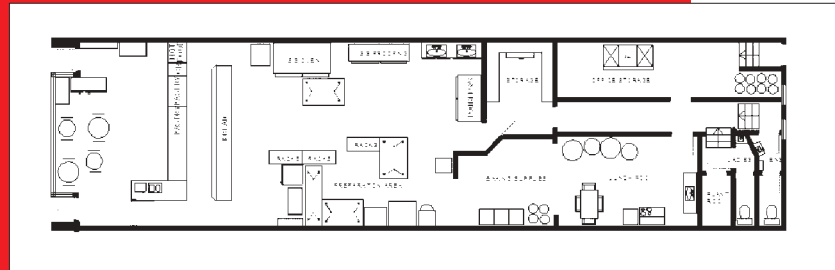


1. Please prepare the following prior to our appointment:

- A site map of your property



- Your building plans to scale





- Construction date of your building. Was it built between:

1864 – 1884 Period 1

1884 - 1904 Period 2

1904 – 1924 Period 3

1924 – 1944 Period 4

1944 – 1964 Period 5

1964 – 1984 Period 6

1984 – 2004 Period 7

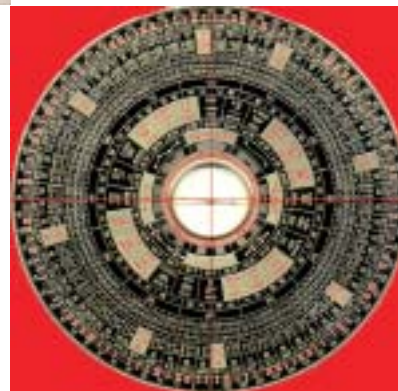
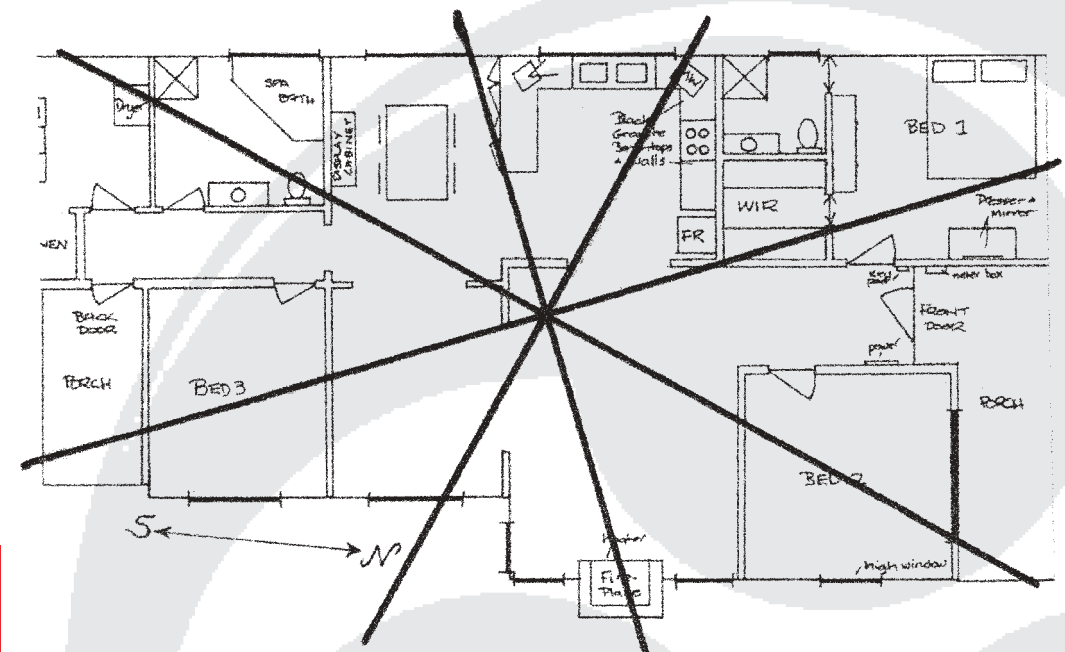
2004 – 2024 Period 8

2024 – 2044 Period 9

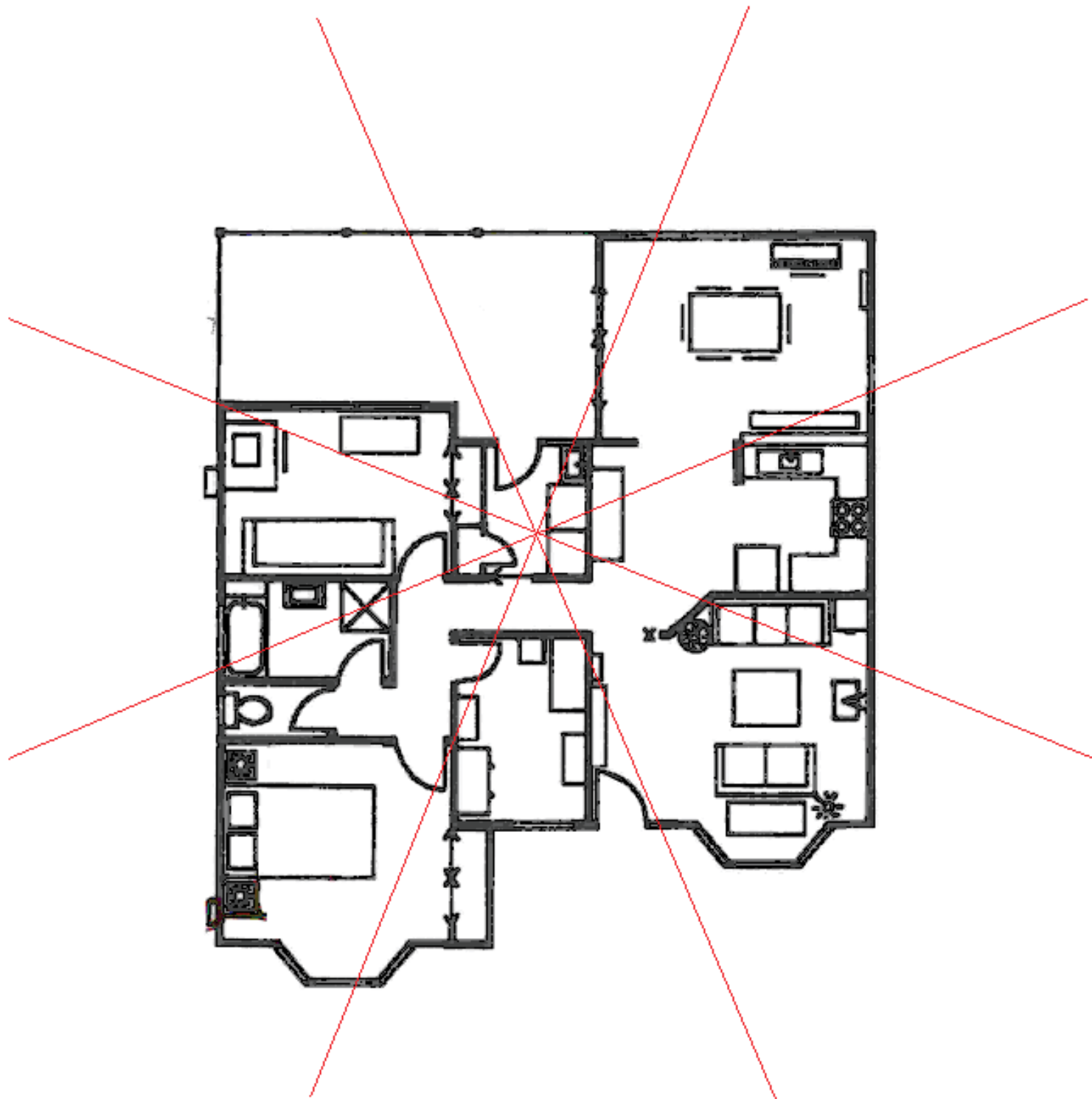
- History of major renovations including dates
- Information on previous occupants
- Dates of birth of current occupants

Your consultation takes around 3 hours:

2. I take a compass reading and construct a traditional Feng Shui chart used in the analysis.



3. We discuss how the Feng Shui of your building affects you; issues, such as health, wealth, happiness, relationships, career, staff or children's behavioural problems plus more.



4. Together we survey the external features of the property including roads, pathways, gardens, mountains and water.





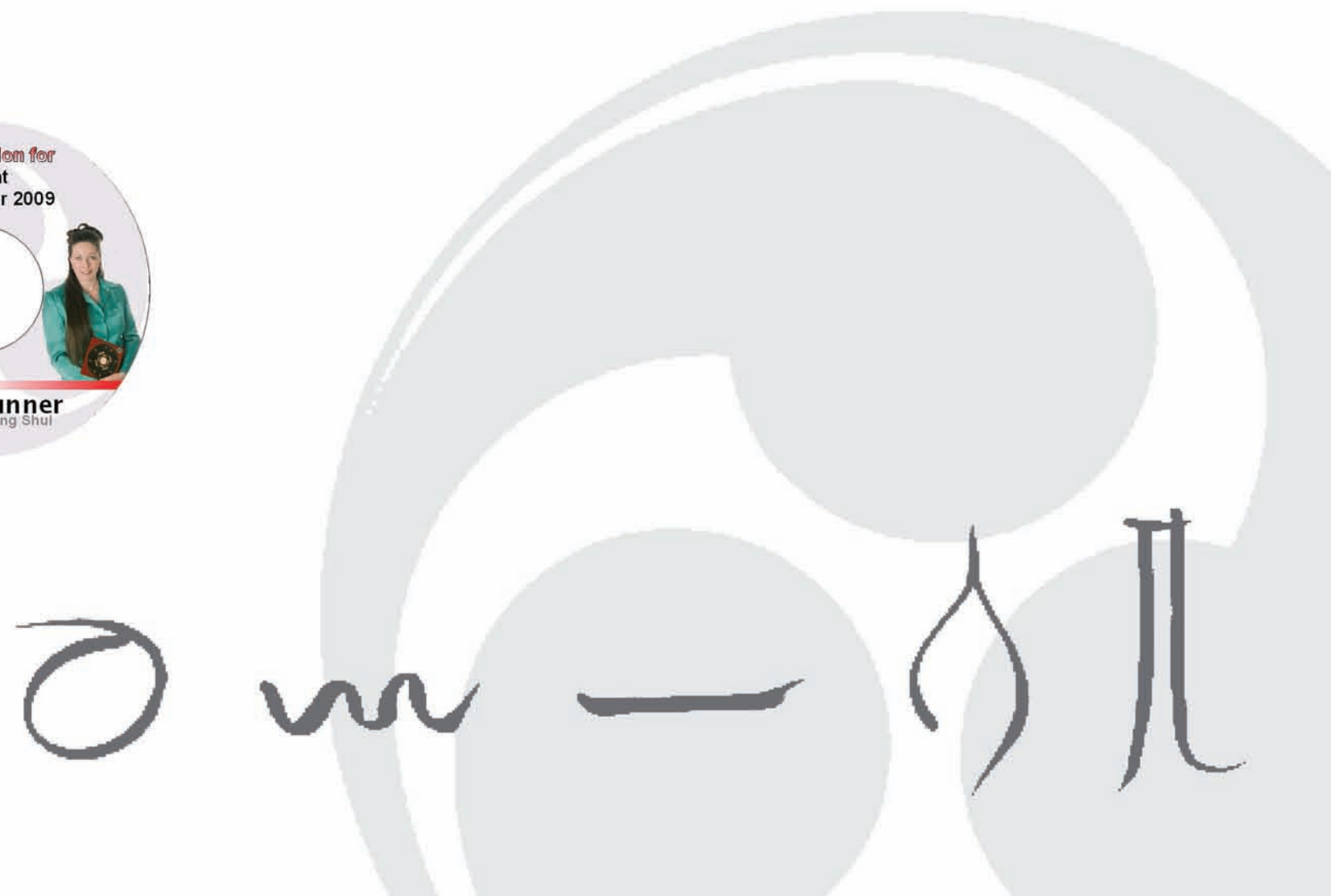
5. We inspect the interior and discuss recommendations, I make notes on your plans indicating where to place certain objects, furniture, colour scheme, decor, pathways.



6. I check the electromagnetic fields and ensure there's no health risks in sleeping and high-use areas.



7. I cover issues with building safety, pollutants, air quality and other aspects of Building Biology.
8. I measure the earth's energy and recommend certain remedies for such problems as insomnia and illness.
9. I present you with the plans and notes, then send you a CD of our conversation for your PC to listen to and review, which also includes more information on Feng Shui.



10. Later on you'll receive a follow-up letter and we can discuss and review your results.

Clients are encouraged to ask questions about any aspect of the consultation and I keep them informed annually prior to Chinese New Year. An annual update is recommended to ascertain the influences of time.

